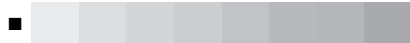


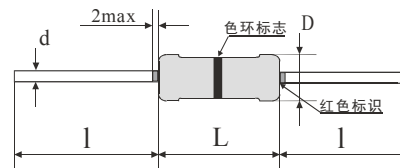
- Small size, strong current
- Be applicable for jump circuit



- GB/T5729-2003
- Q/RU262-2014 RJ013 014 015

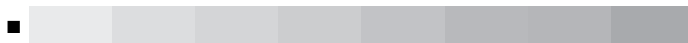


	D		L		d 0.05	1 2
RJ013	1.9	0.2	3.5	0.3	0.5	26
RJ014	2.3	0.2	6.5	0.3	0.6	
RJ015	3.5	0.4	9.6	0.5	0.7	



			Ω		$^{\circ}\text{C}$
RJ013	1/6	1.5	≤ 70	250	-55 150
RJ014	1/4	2.5	≤ 25	350	
RJ015	1/2	2.5		500	

膜式固定电阻器



Insulation Voltage	V, 1 V-block Method, voltage follow the upper table, 1min	No breakage or flashover
Solderability	265±5°C, 2±0.5S	≥95% ≥95% of the dipped surface covered
Terminal Strength	Pull: 5N(RJ013), 10N(others), Bend: 2times Twist: 180°, 2times	$\Delta R \leq \pm(0.5\%R + 0.05\Omega)$



Type Rated Power