

Small size, high power, high current support, easy to install

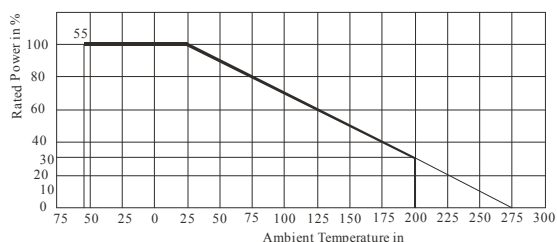
Used for sampling, over current loaded

RXG23 RXG23 Starting resistor

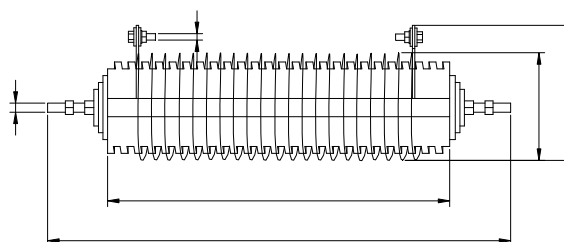
Applicable Specifications

GB/T5729-2003
Q/RU413-2007 RXG23

Derating curve



Dimensions



Technical and Standard Electrical Specifications

Power Range (W)	Resistance Range (Ω)	Resistance Tolerance (%)	TCR (10 ⁻⁶ /)	Temperature Rise °C
640	0.1~1	±5, ±10	100	500

Performance

Item	methods	Requirements
Constant damp-heat	40 ±2 , 90 95 %,96h	R ±10%R
Temperature change	-55°C 200°C , 3 Cycles	No visible mechanical damage R ±2%R
Vibration	1 500Hz , 0.35mm , 23min	No visible mechanical damage R ± 2%R 0.05
Terminal strength	20N,10s	No visible mechanical damage R ± 1%R 0.05
Insulation resistance	100V _{DC}	R _I 1G
Withstand voltage V _{AC}	500,1min	No breakdown or flashover
Over-load	1 50A,72s,1 ;2 40A,62s,1 ;3 60A,20s,6 ;4 120A,3s,50 ,time-interval measurement 30s/	R ± 15%R 0.1

Ordering Information

RXG23 640W 1 J
Type Power Nominal Resistance Tolerance