

■适用于各种电源、变频器、可做制动电阻
Used in various power sources, frequency converter, brake system

RXG24 功率型线绕固定电阻器 (可替代 RX24)
RXG24 Power type, wirewound resistor

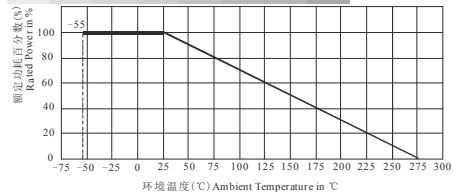
■ 适用标准 Applicable Specifications

- GB/T5729-2003 电子设备用固定电阻器 第一部分: 总规范
- Q/RU183A-2014 RXG24 功率型线绕电阻器详细规范

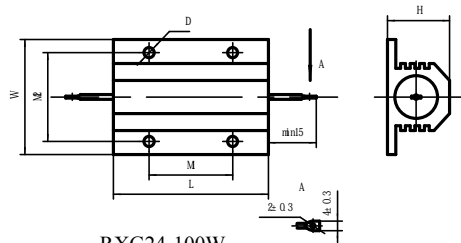
■ 外形尺寸 Dimensions in millimeters

型号功率 Type & Power	阻值范围 Resistance Range (Ω)	外形尺寸 dimension(mm)						最大重量 Max. Weight (g)
		L±2	W±2	Hmax	M1	M2±0.5	ΦD	
RXG24-100W	0.5~1K	65.5	48	26	35±0.5	37	4.4±0.4	120
RXG24-1-100W								
RXG24-200W		90			70±0.5	57.2	5.1±0.5	480
RXG24-300W	1~2 K	128	73	45	104±0.5	59	6.6±0.5	700
RXG24-500W	1~1 K	200			174±1	59		1200

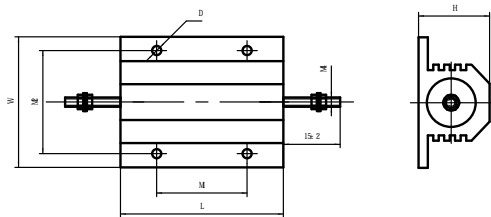
■ 降功耗曲线 Derating



■ 外形尺寸图 Dimensions

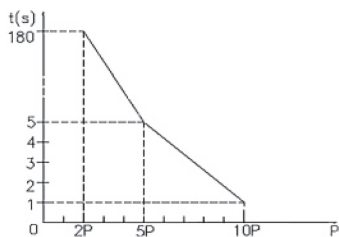


RXG24-100W

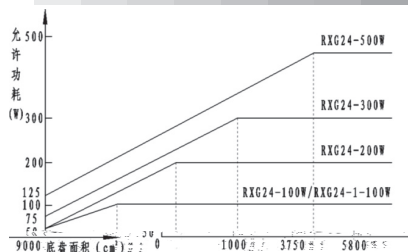


RXG24-1-100W

■ 电阻器的功率过载与持续时间的关系图
Power overload -duration time



■ 电阻器允许功耗与安装底盘面积的关系图
Mounted chassis area -Maximum power applied



■ 主要检验项目、检验方法及性能要求 Performance

检验项目 Test	检验方法 Conditions of Test	性能要求 Test Limits
稳态湿热 Damp heat, Steady state	40±2°C, RH90~95%, 48h	无机械损伤 No mechanical damage ΔR≤±(1%R+0.05Ω)
引出端强度 Terminal Strength	电阻器两引出端应能承受沿轴向的静负荷 1Kg Two terminal resistors should be able to withstand the static load along the axial direction of 1Kg	
温度快速变化 Rapid Change of Temperature	-55°C/155°C, 3 cycles	无可见损伤 No visible damage R≤±(3%R+0.05Ω)
振动 Vibration	10~500Hz, 98 m/s ² , 6h	
低气压 Low air pressure	100W: 600V _{DC} , 200W: 700V _{DC} , 300W: 600V _{DC}	无击穿、飞弧现象 No breakdown or arcing
耐电压 Dielectric Withstand Voltage	100W: 1800V _{DC} 200W~300W: 2400V _{DC}	
温升 Temperature Rise	U _R	≤275°C
绝缘电阻 Insulation Resistance	(500±50)V, V-block method	R _i ≥100MΩ
短期负荷 Short-Time Overload	25°C, U _R , 100h	ΔR≤±(3%R+0.05Ω)

■ 订货指南 Ordering Information

RXG24 - 100W - 50Ω - J

型号 Type - 额定功率 Power - 标称阻值 Nominal Resistance - 允许偏差 Tolerance

对于本页内容的任何变更, 恕不另行通知。订货前, 请确认技术参数。Specifications are subject to change without notice.