

COC-P-638-2001

WR2210
WR2210 Precision, multi-turn, wirewound potentiometer

Applicable specifications

GJB1523-92
Q/RU21523.1-2000 WR2210

Electrical characteristics

Range of nominal resistance():100 50K
Resistance tolerance:±5%
Linearity:±0.25% available:±0.15%
Terminal resistance: 1%R 5 ,
1%R or 5 , whichever greater
Peak noise: 100
Insulation resistance: R_i 1G(500V)
Dielectric withstand voltage: 750V_{AC}
(Atmospheric pressure)
Limiting Voltage: 300V
Electrical angle: 360°±4°

Environmental characteristics

Rating Power: 2W@ 70°C,0W @ 125°C
Temperature range: -55°C +125°C
TCR:±50×10⁻⁶/°C, 500 ±150×10⁻⁶/°C
(±150×10⁻⁶/°C, when R<500)
Thermal Shock:-65°C +125°C,5 cycles;
R ±5%R
Moisture proof: GJB360A-96, Method 106,240h;
R ±3%R, R_i 100M
High frequency vibration:
GJB360A-96, Method 204
R ±5%R
Shock:GJB360A-96, Method 213

(No mechanical or electrical damage, no transient discontinuity either)

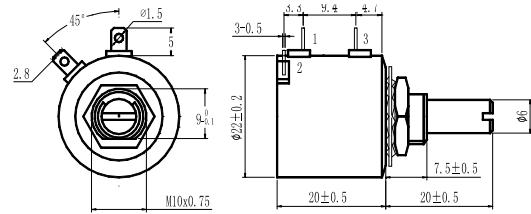
Load Life: 70°C,2W,1000h; R ±5%R
Rotational life:25000 cycles; R ±5%R
Low temperature operation:-65°C,4h; R ±5%R
Salt Spray: (NaCl)5%,35°C 96h;

(No appreciable corrosion)

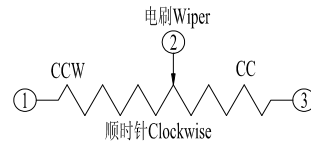
Physical characteristics

Starting torque: 3 mN·m
Running torque: 3 mN.m
End stop torque: 500mN.m
Method of mounting
M10×0.75
Bushing mounted, bushing screw threads: M10×0.75
Weight: 25g
Marking: Code symbol, type, resistance, date code, circuit diagram
Standard package: 20 / ,20pcs/box

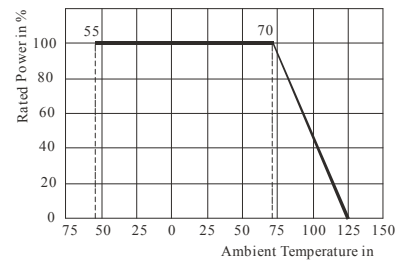
Dimensions



Circuit diagram



Derating



Nominal resistance table

(Ω) Resistance	(%) Resolution
100	0.04
200	0.04
500	0.04
1K	0.035
2K	0.030
5K	0.02
10K	0.018
20K	0.012
50K	0.010

Ordering information

WR2210-D-2-B-7-C-10K

Type – Function And Shaft Length
– Grade And Center Tap –
Temperature Characteristic –
Rotational Life –
Functional Conformity Error And Resistance Tolerance
– Resistance